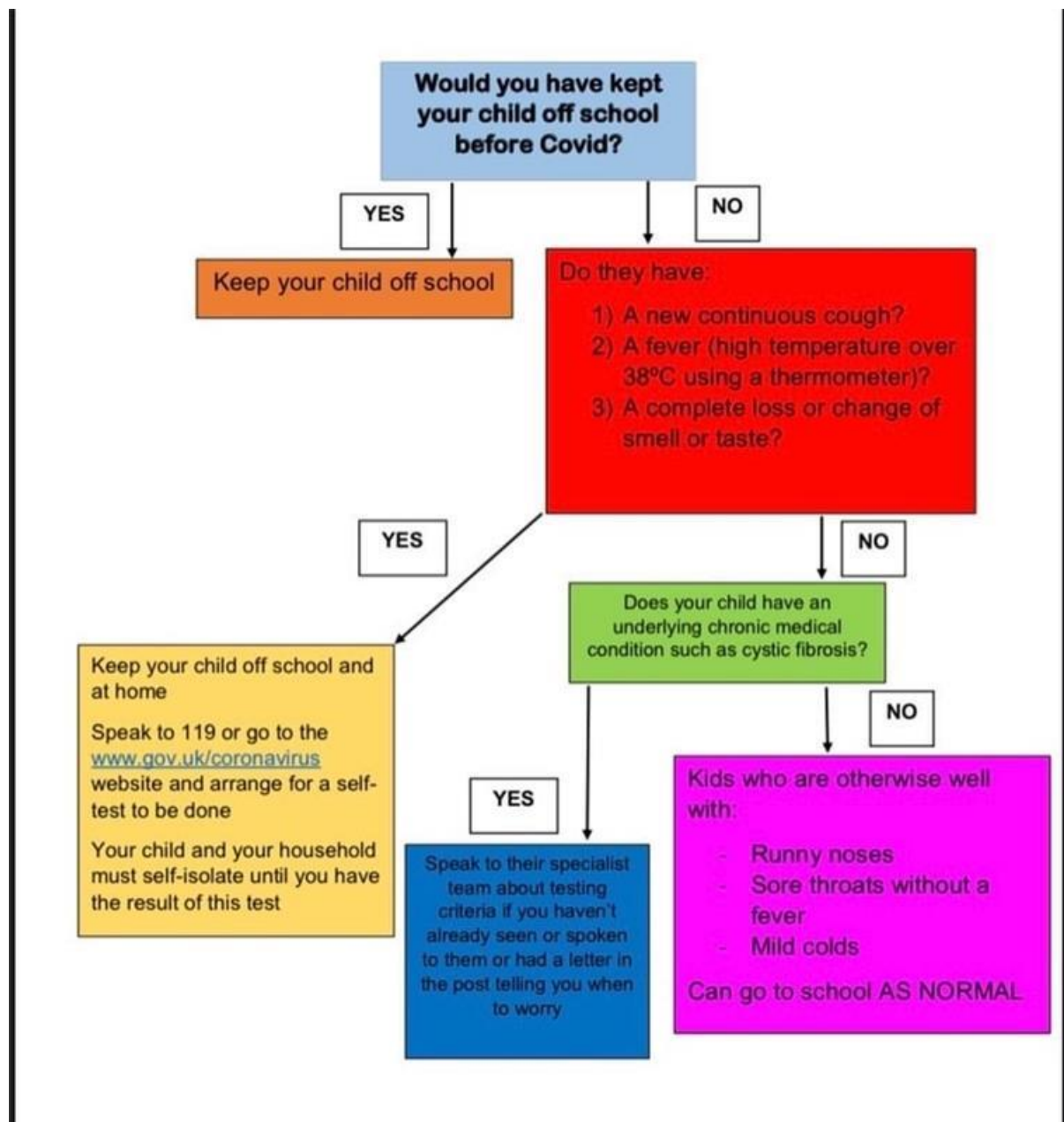


Updated Guidance For Parents

Due to these difficult times the guidance in relation to the attendance at school changes on an almost weekly basis. As a school we will try and keep you updated as quickly as possible.

Current NHS guidance in relation to sickness and diarrhoea is that a child should not be returned to school until **48hrs** after the last period of that illness. This is a change from the 24hrs that schools previously expected and is applicable to children of every age.

Many of you have concerns about the possible symptoms of coronavirus. A flow chart is attached, which we hope will explain things a little better:



Please inform school in the usual way when your child is absent by ringing Mrs Crow on 01754 879211 or via email lcrow@beaconprimaryacademy.org.

Thank you